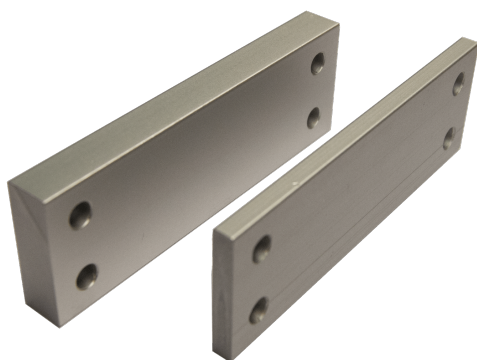


Technical Data



ARTICLE INFO

The Z-K-KL²-DP10 is an adapter plate for the folding arm. It is 10 mm thick.

Application:

- Spacer plate 10 mm for mounting the lower bearing

TECHNICAL DATA

| | |
|--------------|----------------------------|
| Matchcode | Z-K-KL2-DP10 |
| Article name | Adapter plate Z-K-KL2-DP10 |
| Part number | K2 1681 |
| Weight | 0.15 |