

Light Dome Fitting

140° Opener - DomeLift®



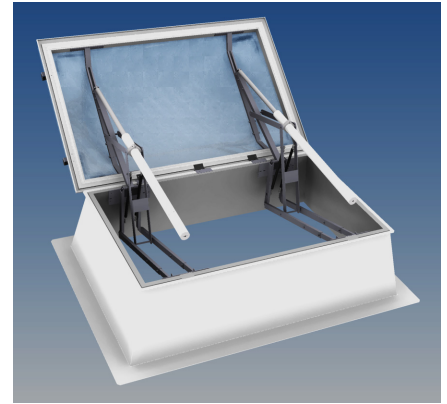
DomeLift® - Light Dome Fitting

The cross-beam system for huge opening angles

DomeLift® is a cross-beam system for light domes. It can be configured for the use in light domes with roof light sizes of 120 cm, 140 cm or 150 cm together with a variable width. **DomeLift®** is used in conjunction with a 24 V linear actuator. Depending on the size of the dome there are different forces from 1000 N up to 2000 N. A secure opening is assured at snow loads up to 500 N/m² and also at bigger light dome sizes. The opening mechanism is designed in a way that no additional hinges at the dome itself are needed. Similarly **DomeLift®** needs no locking mechanism and for daily ventilation it is stoppable at any opening position. **DomeLift®** opens light domes up to the minimum opening angle of 140° as it is required by the European standards.

Capabilities

DomeLift® is mountable in almost all major curbs. Whether you have stock light domes in restructuring case, set up new systems or you want to install them in tandem version - cause of the very flexible structure the system can be used in many aspects.



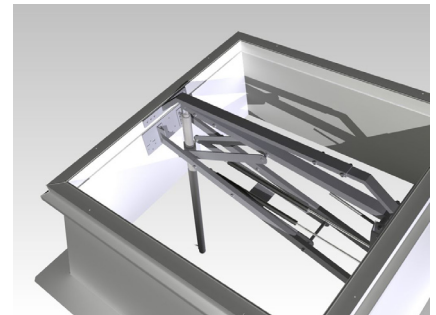
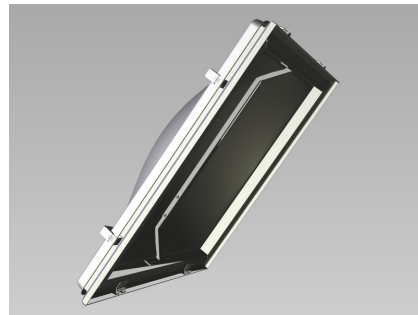
Installation instruction

With a few simple steps the cross-beam system is adjusted and mounted to the different sizes of light domes. Essentially the installation proceeds in three steps:

Step 1: Adjust the bracket to the right mounting size and then mount the cross-beam system into the curb from top or bottom side.

Step 2: The likewise adjusted dome carrier must be installed to the frame.

Step 3: Set up the suitable linear actuator to the cross-beam system and connect it to the control unit.



! If you provide us with the dimensions of your curb and light dome we will like to advise you about the possibilities to use **DomeLift®** in your project. We will take care of the determination for the right actuator which is suitable to the size of the dome and the expected live loads (snow load).


Technical Data

For cross-beam system:

Roof light size	120 cm	140 cm	150 cm
Mounting dimensions	100 cm	120 cm	130 cm
Necessary stroke	600 mm	705 mm	750 mm
Material	Galvanised Steel		
Weight	ca. 17 kg		

For linear actuator:

Nominal voltage	24 V DC
Nominal current	1,2 to 4,0 A
Force	Up to 2000 N
Cut-off	Electrical cut-off system
Operating Temp.	-5 °C to +75 °C

 **SIMON RWA Systeme® GmbH** | Medienstraße 8 | D – 94036 Passau
Tel: + 49 851 98870 – 0 | **Fax:** +49 851 98870 – 70 | **E-Mail:** info@simon-rwa.de | **Internet:** www.simon-rwa.de

 **SIMON RWA Systeme AG**
 Allmendstrasse 8
 CH - 8320 Fehraltorf
Tel: + 41 44 956 50 30
Fax: + 41 44 956 50 40
E-Mail: info@simon-rwa.ch
Internet: www.simon-rwa.ch

 **SIMON RWA Systeme GmbH**
 Aumühlweg 21 / Ared Park TOP 313/414
 A - 2544 Leobersdorf
Tel: + 43 2256 64001
Fax: + 43 2256 64070
E-Mail: info@simon-rwa.at
Internet: www.simon-rwa.at


SIMON RWA®
 Begeisterung trifft Technik