

Lichte Höhe / Clear opening height LH [mm]

Lichte Breite / Clear opening width LB [mm]

Mindestabmessung am Kasten / Minimum dimensions required on head B x H [mm]:

Elektrische VIC - Antriebe mit Schwerkraftbetrieb / Dedicated VIC electric drives with gravity operation

- Interner Motor / internal motors:

- Externer Motor / external motors:

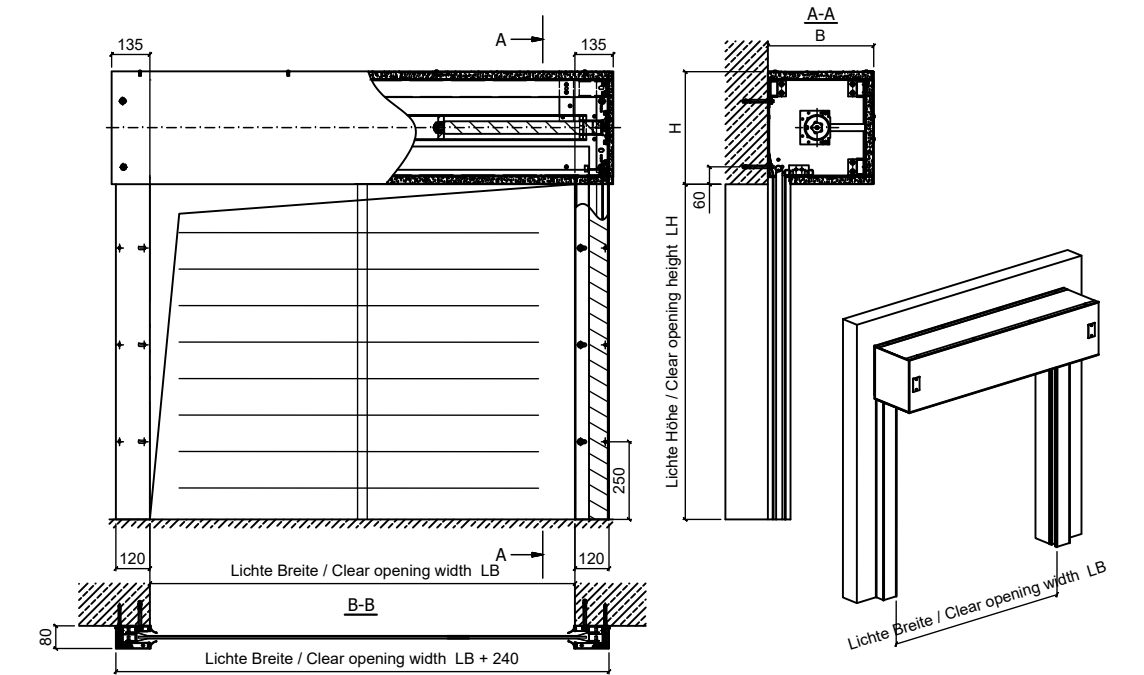
Lichte Höhe / Clear opening height LH [mm]	750 - 1000	1001 - 1500	1501 - 2000	2001 - 2500	2501 - 3000	3001 - 3500	3501 - 4000	4001 - 4500	4501 - 5000	5001 - 5500	5501 - 6000	6001 - 6500	6501 - 7000	7001 - 7500	7501 - 8000	8001 - 8500	8501 - 9000	9001 - 9500	9501 - 10000	10001 - 10500	10501 - 11000	11001 - 11500	11501 - 12000
9751 - 10000	3	3	4	4	5	5	5	5	5	6	6	6	6	6	6	6	6	6	6	6	6	6	6
9501 - 9750	3	3	4	4	5	5	5	5	5	6	6	6	6	6	6	6	6	6	6	6	6	6	6
9251 - 9500	3	3	4	4	5	5	5	5	5	6	6	6	6	6	6	6	6	6	6	6	6	6	6
9001 - 9250	2	3	4	4	5	5	5	5	5	6	6	6	6	6	6	6	6	6	6	6	6	6	6
8751 - 9000	2	3	4	4	5	5	5	5	5	6	6	6	6	6	6	6	6	6	6	6	6	6	6
8501 - 8750	2	3	4	4	5	5	5	5	5	6	6	6	6	6	6	6	6	6	6	6	6	6	6
8251 - 8500	2	3	4	4	5	5	5	5	5	6	6	6	6	6	6	6	6	6	6	6	6	6	6
8001 - 8250	2	3	4	4	5	5	5	5	5	6	6	6	6	6	6	6	6	6	6	6	6	6	6
7751 - 8000	2	3	3	4	4	5	5	5	5	6	6	6	6	6	6	6	6	6	6	6	6	6	6
7501 - 7750	2	3	3	4	4	5	5	5	5	6	6	6	6	6	6	6	6	6	6	6	6	6	6
7251 - 7500	2	3	3	4	4	5	5	5	5	6	6	6	6	6	6	6	6	6	6	6	6	6	6
7001 - 7250	2	3	3	4	4	5	5	5	5	6	6	6	6	6	6	6	6	6	6	6	6	6	6
6751 - 7000	2	3	3	4	4	5	5	5	5	6	6	6	6	6	6	6	6	6	6	6	6	6	6
6501 - 6750	2	3	3	4	4	5	5	5	5	6	6	6	6	6	6	6	6	6	6	6	6	6	6
6251 - 6500	2	3	3	4	4	5	5	5	5	6	6	6	6	6	6	6	6	6	6	6	6	6	6
6001 - 6250	2	3	3	4	4	5	5	5	5	6	6	6	6	6	6	6	6	6	6	6	6	6	6
5751 - 6000	2	3	3	4	4	5	5	5	5	6	6	6	6	6	6	6	6	6	6	6	6	6	6
5501 - 5750	2	3	3	4	4	5	5	5	5	6	6	6	6	6	6	6	6	6	6	6	6	6	6
5251 - 5500	1	2	2	3	3	4	4	4	4	5	5	5	5	5	6	6	6	6	6	6	6	6	6
5001 - 5250	1	2	2	3	3	4	4	4	4	5	5	5	5	5	6	6	6	6	6	6	6	6	6
4751 - 5000	1	2	2	3	3	4	4	4	4	5	5	5	5	5	6	6	6	6	6	6	6	6	6
4501 - 4750	1	2	2	3	3	4	4	4	4	5	5	5	5	5	6	6	6	6	6	6	6	6	6
4251 - 4500	1	2	2	3	3	4	4	4	4	5	5	5	5	5	6	6	6	6	6	6	6	6	6
4001 - 4250	1	2	2	3	3	4	4	4	4	5	5	5	5	5	6	6	6	6	6	6	6	6	6
3751 - 4000	1	1	2	2	3	3	4	4	4	5	5	5	5	5	6	6	6	6	6	6	6	6	6
3501 - 3750	1	1	2	2	3	3	4	4	4	5	5	5	5	5	6	6	6	6	6	6	6	6	6
3251 - 3500	1	1	2	2	3	3	4	4	4	5	5	5	5	5	6	6	6	6	6	6	6	6	6
3001 - 3250	1	1	2	2	3	3	4	4	4	5	5	5	5	5	6	6	6	6	6	6	6	6	6
2751 - 3000	1	1	2	2	3	3	4	4	4	5	5	5	5	5	6	6	6	6	6	6	6	6	6
2501 - 2750	1	1	2	2	3	3	4	4	4	5	5	5	5	5	6	6	6	6	6	6	6	6	6
2251 - 2500	1	1	2	2	3	3	4	4	4	5	5	5	5	5	6	6	6	6	6	6	6	6	6
2001 - 2250	1	1	2	2	3	3	4	4	4	5	5	5	5	5	6	6	6	6	6	6	6	6	6
1751 - 2000	1	1	2	2	3	3	4	4	4	5	5	5	5	5	6	6	6	6	6	6	6	6	6
1501 - 1750	1	1	2	2	3	3	4	4	4	5	5	5	5	5	6	6	6	6	6	6	6	6	6
1251 - 1500	1	1	2	2	3	3	4	4	4	5	5	5	5	5	6	6	6	6	6	6	6	6	6
1001 - 1250	1	1	2	2	3	3	4	4	4	5	5	5	5	5	6	6	6	6	6	6	6	6	6
101 - 1000	1	1	2	2	3	3	4	4	4	5	5	5	5	5	6	6	6	6	6	6	6	6	6

-vereinfachte Montage / simplified assembly

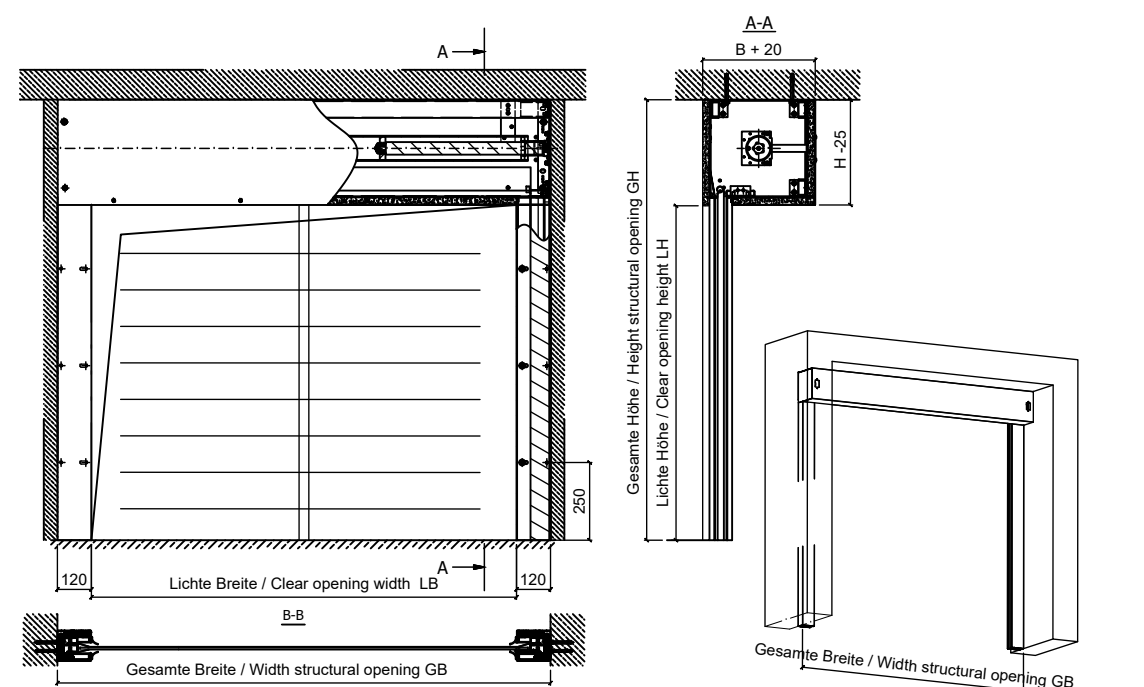
- 325 x 350
- 375 x 400
- 425 x 450
- 475 x 500
- 525 x 550
- 575 x 600
- 625 x 650
- 675 x 700
- 725 x 750
- 775 x 800

- Elektrische VIC - Antriebe mit Schwerkraftbetrieb / Dedicated VIC electric drives with gravity operation
- Interner Motor / internal motors:
    - 1 - VIC-0122 [230V AC, 1.2A, 265W]
    - 2 - VIC-0123 [230V AC, 1.9A, 435W]
    - 3 - VIC-0124 [230V AC, 1.9A, 435W]
  - Externer Motor / external motors:
    - 4 - VIC-0242 [3x400V AC, 2A, 450W]
    - 5 - VIC-0243 [3x400V AC, 2.7A, 900W]
    - 6 - VIC-0244 [3x400V AC, 4.1A, 1100W]

1. Wandmontage / wall mounting:



2. Sturz - Deckenmontage / Nische - ceiling mounting:



Project: Fire PROtec - EI 120		Scale: 1 : 20	Page: 1 / 1
Part Number: Fire PROtec - EI 120 Diagramm		Revision: 1.0	SIMON PROtec Systems GmbH Medienstraße 8 D - 94036 Passau Tel.: +49 (0)851 98870-0 Fax.: +49 (0)851 98870-70
Check/Approval: 10.03.2021 - C. Schneider			
Designed/Drawed: 10.03.2021 - P. Bersuch			

**Installation Proposal Sketch!** — no warranty for function and accuracy!

All shown details like fixing of brackets and position of actuator are a parts of an installation proposal without any guarantee.  
Please inspect all relevant details in order to ensure a similar execution like the shown installation proposal.  
The user is responsible for the final realization.  
Please check the fixing points to avoid problems with stability and collision with other parts.

**SIMON**  
we create fire safety