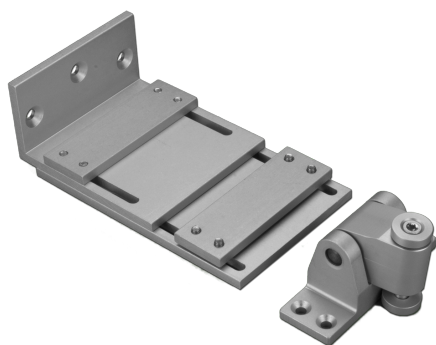


## Technical Data



### ARTICLE INFO

The bracket K-KL<sup>2</sup>-M is an accessory for Folding Arm<sup>2</sup> actuators.

#### Application:

- Standard bracket set for outward opening bottom-hung and top-hung sashes, mounting on the main closing edge, for PA-KL<sup>2</sup>

#### Overview of the K-KL<sup>2</sup>-M bracket:

- Accessories for the folding arm
- for mounting on the (main) closing edge of outwardly opening SHEV windows

### TECHNICAL DATA

Matchcode	K-KL <sup>2</sup> -M
Article name	Bracket K-KL <sup>2</sup> -M
Part number	K2 1610
Weight	0.7