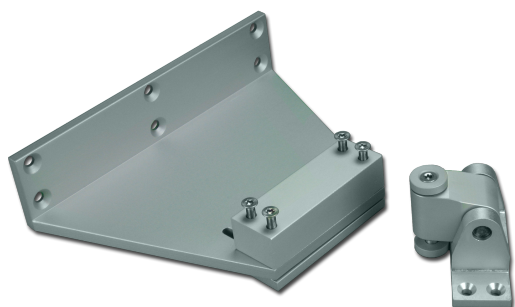


Technical Data**ARTICLE INFO**

The bracket K-KL²-M (S) -RAICO105D is an accessory for Folding Arm² actuators.

Application:

- Bracket set for RAICO 105D profile series for mounting on main and left secondary closing edge.

Bracket K-KL²-M (S) -RAICO105D at a glance:

- Accessories for folding arm
- for mounting on Raico 105D profiles for SHEV windows

TECHNICAL DATA

Matchcode	K-KL ² -M(S)-RAICO105D
Article name	Bracket K-KL ² -M(S)-RAICO105D
Part number	K2 1616
Mounting way	aufgesetzt
Weight	1.2