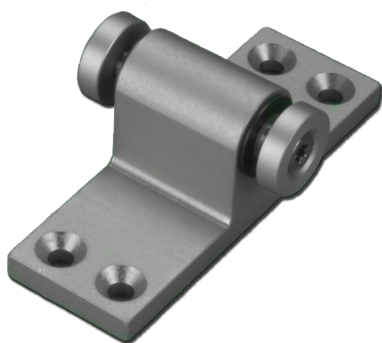


Technical Data**ARTICLE INFO**

The bracket K-KL²-S is an accessory for Folding Arm² actuators. Upper bracket for lateral mounting opening outwards.

Function: Upper joint bracket for PA-KL².

Bracket K-KL²-S-OK at a glance:

- accessories for the folding arm
- upper bracket for lateral mounting opening outwards

TECHNICAL DATA

Matchcode	K-KL ² -S-OK
Article name	Bracket K-KL ² -S-OK
Part number	K2 1609
Weight	0.1