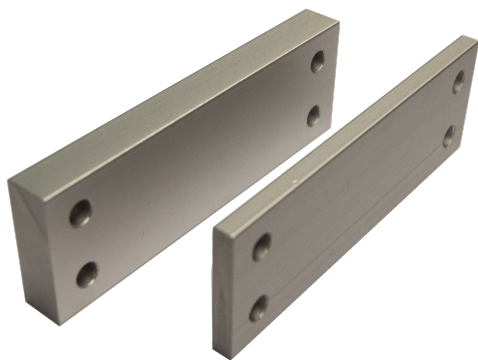


Technical Data



ARTICLE INFO

The Z-K-KL²-DP10 is an adapter plate for the folding arm. It is 10 mm thick.

Application:

- Spacer plate 10 mm for mounting the lower bearing

TECHNICAL DATA

Matchcode	Z-K-KL2-DP10
Article name	Adapter plate Z-K-KL2-DP10
Part number	K2 1681
Weight	0.15