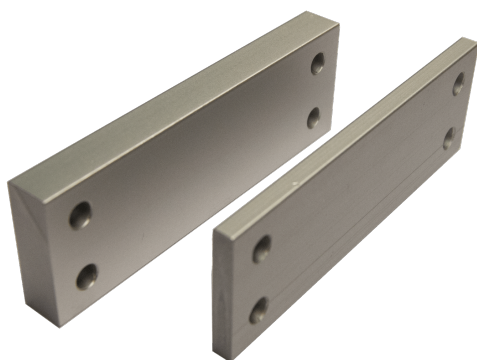


## Technical Data



### ARTICLE INFO

The Z-K-KL2-DP25 is an adapter plate for the folding arm. It is 25 mm thick.

#### Application:

- Spacer plate 25 mm for mounting the lower bearing

### TECHNICAL DATA

Matchcode	Z-K-KL-DP25
Article name	Adapter plate Z-K-KL2-DP25
Part number	K2 1617
Weight	0.2