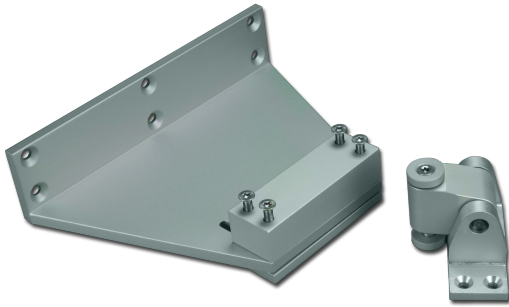


Technical Data



ARTICLE INFO

The bracket K-KL²-L-RAICO105D-LI is an accessory for Folding Arm² actuators PA-KL²-L.

Application:

- Bracket set for RAICO 105D profile series for mounting on main and left secondary closing edge. With support bracket for longer folding arm variants -M and -L.

Bracket K-KL²-L-RAICO105D-LI at a glance:

- Accessories for folding arm PA-KL²-L
- for mounting on Raico 105D profiles for SHEV windows
- Mounting on the left sideways edge
- with extra stabilisation bracket

TECHNICAL DATA

Matchcode	K-KL ² -L-RAICO105D-LI
Article name	Bracket K-KL ² -L-RAICO105D-LI
Part number	K2 1649
Mounting way	aufgesetzt
Weight	2.5